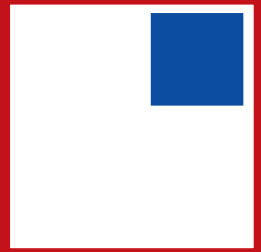


ENERGATE®

EXPERIENCE A FUTURE FULL OF
LIGHT AND WARMTH



EXPERIENCE TOMORROW'S WORLD TODAY

Energy-efficient homes for a better life

Energy is a resource which is becoming more and more valuable. At the same time we have ever increasing wishes for a more comfortable and better life. With ENERGATE® our partner Häußler Windows and Doors has been able to develop a highly-insulating window and door system which makes your dreams for the future a reality today. ENERGATE® provides a true ecological contribution to CO2 reduction. While at the same time creating comfortable homes full of light and warmth in which you and your family will feel happy for years to come. Häußler's high-insulating windows allow you to enjoy a new level of comfort, to disregard price developments in the energy sector and to cut your heating bills. In short, an excellent solution and great investment for the value retention of your property.

International experience

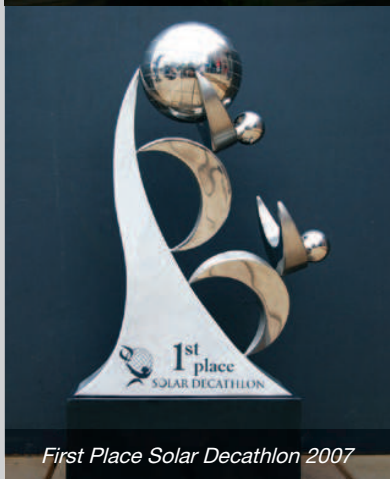
The clever and effective utilisation of energy resources is of global importance: Yet another reason why we are in international demand as a pioneer and specialist for the construction of high-insulating windows. Due to our extensive experience in the construction of energy-efficient windows, ENERGATE® windows and doors have been applied in numerous projects in Germany, Ireland, Denmark, Belgium, and Norway. A great honour has been the utilisation of Häußler ENERGATE® windows by the German team competing in Solar Decathlon 2007, an international architecture competition held in Washington D.C., USA. The house of the future exhibited in front of the White House underlines the fact that our high-insulating windows already meet the requirements of the "Year 2015 Prototype Home".



Company entrance



Year 2015 Prototype Home



First Place Solar Decathlon 2007



Exterior view Prototype Home



Häußler windows and doors – future oriented from the start

ENERGATE® is the result of extensive experience in the construction of windows. Our family-owned company, founded in 1919, has focussed on innovation from the very start. New patented solutions as well as cutting-edge designs and engineering make the ENERGATE® system a unique product. Durability, comfort, safety, light-related design and a highly-efficient energy balance are values which are important to us. To ensure the highest quality, we produce our future-oriented products at our own factory in Speyer, Germany – we always try to be ahead of our time.



MAKE YOUR DREAMS REALITY

Greater living comfort

ENERGATE® provides you with future-oriented windows whose level of insulation is much higher than conventional windows. It has been designed not only to ensure minimal heat loss, but also to lower heating costs and guarantee greater living comfort. Whether for passive houses, KfW40 or KfW60 houses, new buildings or the renovation of old buildings – ENERGATE® will always provide you with the perfect solution for your individual requirements.

More light and stylish designs for your home

We want to ensure your complete comfort with ENERGATE®. Therefore, the ENERGATE® system not only offers you state-of-the-art technology and high-level heat insulation, but also provides you with increased comfort due to its stylish designs. Slender profiles – in particular our attractive glass leaf version – allow more light and energy to enter your home than conventional windows. To allow more freedom of planning and light to enter your home, we can use our extensive know-how to realise large surface glazing. Furthermore, due to its elegant design ENERGATE® is a popular window for modern architectural projects.

A reliable partner

Our ENERGATE® windows enable you to build-to-plan. Yet another reason why we have been a reliable partner of direct customers, energy consultants, planners, architects and building companies for many years. Our range of products includes system solutions from just one source, national and international deliveries, object-specific CAD planning and heat transmission calculations (PHPP planning). We also provide details about various construction and wall systems. Whether thermal insulation composite systems, vacuum technology, high-insulating wood constructions, high-insulating shuttering blocks or pre-fabricated concrete walls – we realise your projects reliably and flexibly.



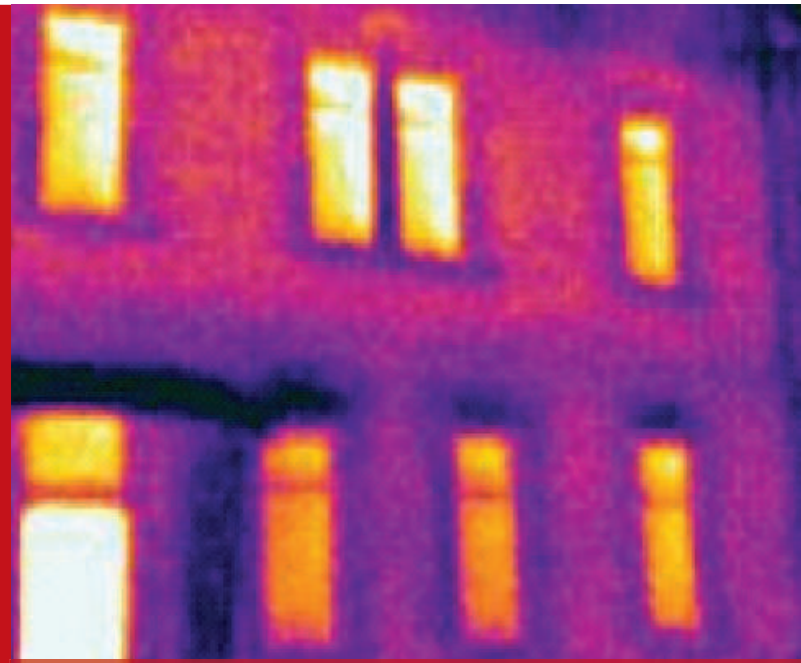
MORE WARMTH FOR MORE COMFORT

Pleasant warmth for your home

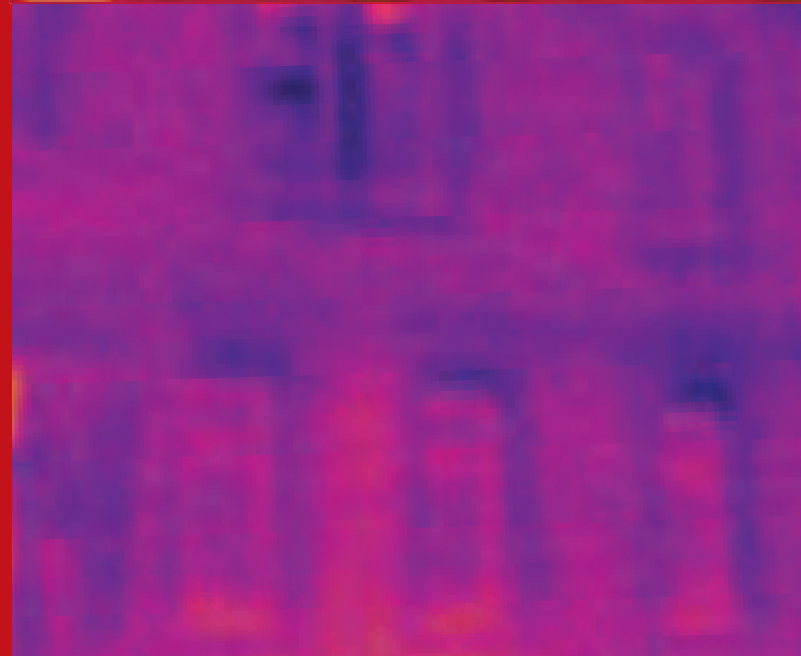
The extremely good heat insulation values of ENERGATE® windows guarantee greater living comfort. The inner surface temperatures are up to 15°C higher than with conventional windows. You can create a harmonious temperature balance in your home, providing greater living comfort.

Tested energy gains

The heat insulation values even exceed the high demands of passive houses. ENERGATE® not only stops heat from escaping, but also helps you to produce more energy for your home. With ENERGATE® you receive certified quality products which have been field-proven in numerous objects. Each ENERGATE® window has been subjected to numerous tests, including testing at the renowned passive house institute Dr. W. Feist in Darmstadt, Germany.



Before



After

Infrared images underline the energy gains with ENERGATE®. Prior to renovation the windows allow a lot of energy to escape (yellow), after installation the heat stays in the house.



THE TRUTH IS IN THE DETAILS

Technology to satisfy the highest demands

ENERGATE® is a product which offers you high-quality solutions down to the very last detail. Numerous certified glass versions and the patented construction of ENERGATE® ensure particularly high light and energy transmission values (Ltr/g value). Continuous seals result in high air tightness. A special feature is the Häußler carbon fibre spacers for the best psi values. These spacers prevent a decrease of temperature – and thus the well known condensation water formation – in the edge seal area.

Make wishes reality

To realise all your design wishes, ENERGATE® is available in wood, plastic or wood-aluminium designs and in many shapes and colours. Designed with your safety in mind: ENERGATE® is equipped with state-of-the-art fittings with two security locks in the standard version; additional security levels are possible up to WK2. A high-level of noise protection even in the standard version increases your living comfort. And it goes without saying that we also provide sun protection systems – and everything else for your doors and windows.



BE COMPLETELY SATISFIED

ENERGATE® installation

By choosing ENERGATE®, you also profit from our years of experience in constructing passive houses. Ludwig Häußler GmbH fitters and their partners are specialised in the installation of high-insulating windows. Our system-specific wall connections enable us to realise your projects reliably and flexibly.

Exceptional air tightness

One of our main priorities is the airtight installation of your windows; proven many times during blower door tests. Temperature-optimised installation in the insulation space provides excellent thermal insulation results.

Flexible solutions to satisfy your demands

We even offer flexible solutions for extraordinary requirements. We use cranes and suction devices to install large surface glazing.

Ensuring that you are completely satisfied with the results

And of course we also install additional products, such as roller shutters, blinds and window sills: Because our goal is to make you completely satisfied with our services.



Putteneers, Belgium



KB house, Germany



Luc Devos, Belgium



Öschger, Germany

MANY SHAPES AND FUNCTIONS

Energy-efficient construction has never been easier than with ENERGATE®. Various window designs and front, side and balcony doors can be produced from just one system, creating a harmonious and attractive overall appearance for your home.

Furthermore, we have a wide range of flexible opening options. Whether fixed glazing, tilt and turn windows, sliding doors or the ENERGATE® sliding door – we make your wishes reality. Here are a few examples of our standard and special designs.



fixed frame



tilt & turn window



doublewing tilt & turn window



tilt & turn with fixframe by side



tilt & turn window with fixframe on top



balcony door with fixframe on top



parallel sliding and tilting door

WE ARE HERE TO HELP YOU

Let us find the best possible solution for your project together. We will answer all of your questions. If you require additional information, or would like to find out more of how ENERGATE® windows can help you please contact us.

Step-by-step to your ENERGATE® system

Call us for a free quote without obligation or simply visit us online. In order to create a good, appropriate quote, we require the dimensions of your windows. Measure the width and height of the window and door openings or send us your planning documents.

But of course prior to production one of our specialists will take the exact measurements. You will then receive a detailed confirmation of order. Customised production begins as soon as your order has been released. We arrange the installation date with you. And finally, we carry out final acceptance of your ENERGATE® windows together. We look forward to hearing from you.

Ludwig Häußler GmbH
Draisstr. 48
D-67346 Speyer
Tel.: +49/(0)6232/3144-0
Fax.: +49/(0)6232/3144-37
Email: info@haeussler-fenster.de
www.passivehousewindows.com
www.energysavingwindows.com

